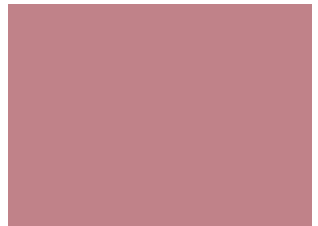


# GLASGOW WOOD

## Projects & Bespoke Services



**Environmentally and socially  
responsible design, fabrication  
and installation services**

**Bespoke indoor & outdoor  
furniture, outdoor structures,  
cladding and more**

**GOOD WITH WOOD**  
PEOPLE | PLANET | HOME

[glasgowwood.org.uk](http://glasgowwood.org.uk)  
[info@glasgowwood.org.uk](mailto:info@glasgowwood.org.uk)  
+44 (0) 141 237 8566



Why work with us?

For over 15 years Glasgow Wood has been building **bespoke furniture and structures** to suit a whole host of indoor and outdoor settings – **all from reclaimed timber**.

Our aims are to ① **contribute to a more circular economy** where timber remains in circulation for longer; and ② **create jobs**, training & volunteering opportunities for local people.

**Our bespoke services span a wide range of outputs**

- Ⓐ **Indoor & outdoor furniture made to specification**, alongside a fully customisable stock product range
- Ⓑ **Cladding fabrication**, as panels or individual boards, sized and finished as needed
- Ⓒ **Indoor & outdoor structures** built to your specification



The benefits

By working with us you're not only helping to **improve the wellbeing of the community** but also the **health of the planet**.

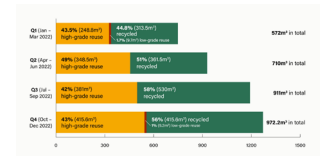
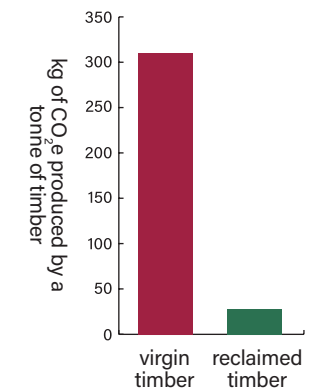
**Reduce your costs** – reclaimed timber comes in at a much lower price compared to purchasing virgin timber.

**Contribute to the circular economy** and help us to keep timber in circulation for longer. In 2022, we collected and sorted approximately 3171.50m<sup>3</sup> of reclaimed timber ready for sale in the Bay F timber yard and for use in our products, bespoke orders and projects.

**Change lives** by giving us the means to provide 4,538 volunteering hours to 36 local unemployed people over the last 6 months.

**Play your part** in the local community by supporting a not-for-profit social enterprise.

**Reduce carbon emissions**  
"Felling, milling and transporting a tonne of timber produces around 310kg of CO<sub>2</sub>e, while reusing a tonne of existing timber only produces around 30kg of CO<sub>2</sub>e\*." This means that using reclaimed timber rather than virgin timber displaces around 280kg CO<sub>2</sub>e per tonne.\*\*



Visit [glasgowwood.org.uk/news](https://glasgowwood.org.uk/news) to view our 2022 wood reuse statistics

\*Vehicle and production emissions estimates: Abi Frost, Carbon & Climate Change Specialist, WSP | Parsons Brinckerhoff, 2016  
\*\*Our Measures - Community Wood Recycling (CWR)



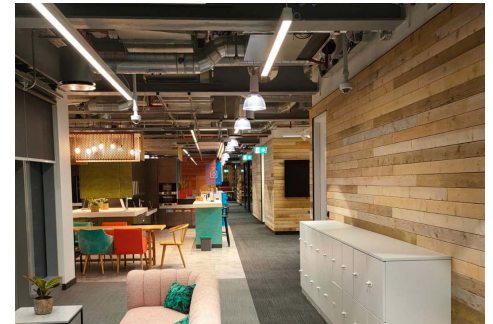
Cladding, bespoke indoor & outdoor furniture

## Barclays Glasgow Campus

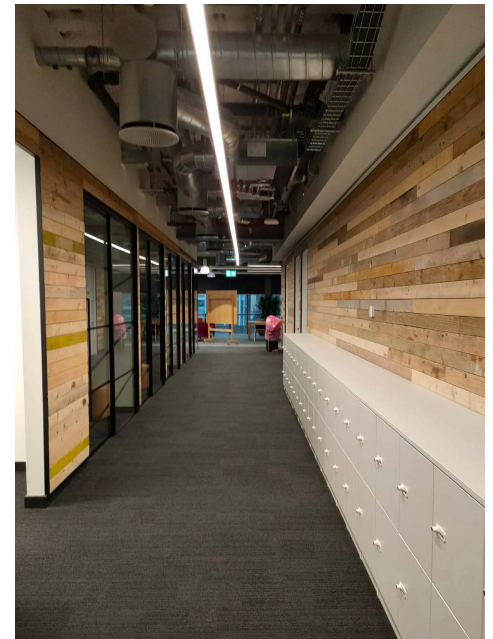
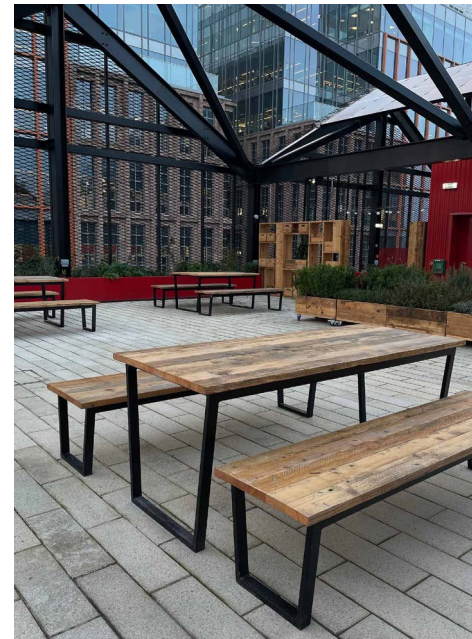
Contributing to the sustainable regeneration of a historic section of the Clyde Waterfront.

In mid 2022, Barclays opened its new campus in Tradeston to house their Technology, Operations, and Functions Teams. The 500,000 sq. ft. site has transformed a brownfield area into workspaces, indoor and outdoor spaces for community events, and other amenities including wellbeing facilities and exhibition spaces.

Keeping it as environmentally friendly as possible, Barclays asked local suppliers and contractors wherever possible to cover the design and outfit of all the spaces. Glasgow Wood was asked by several companies (including Sky Garden, Brown & Carroll and Insightful Environments UK) to supply **cladding** for the work, meeting and corridor spaces; bespoke **steel-framed table tops and benches** to support hybrid working; and bespoke **storage units, moveable planters, tables and benches** for their rooftop space.



**From top left:** bespoke shelving unit with bar top and enclosed storage; private meeting spaces and corridor spaces with cladded walls; steel-framed outdoor benches and tables; bespoke shelving unit with storage crates.





Cladding, bespoke furniture & fitted furniture

## Queen Margaret Union's Café

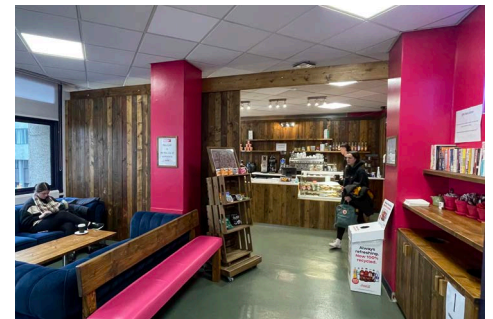
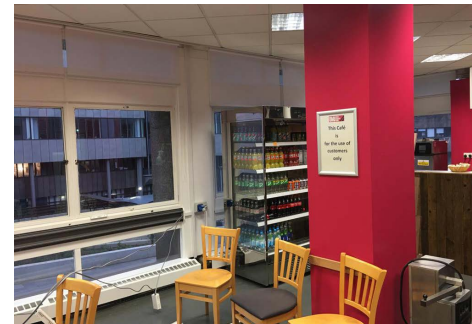
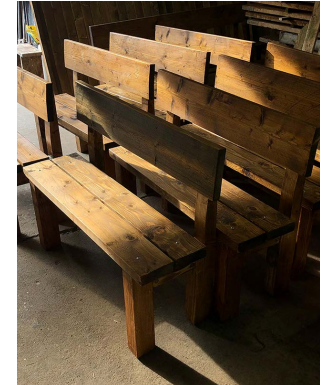
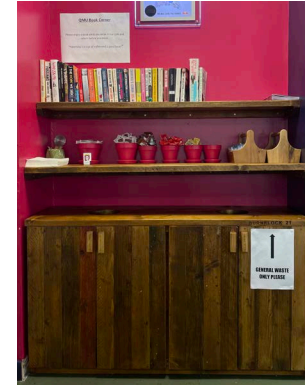
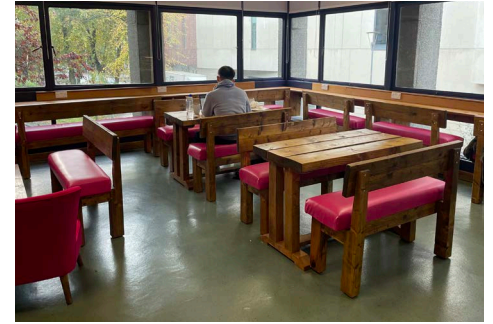
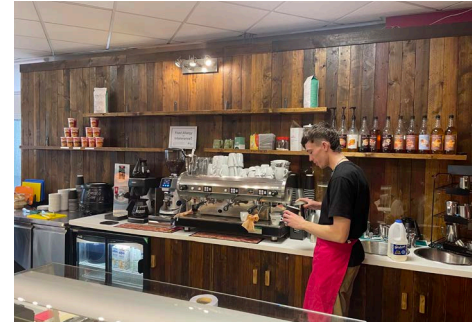
Transforming the student union café to become a more functional and usable space.



Queen Margaret Union at Glasgow University approached us to upgrade their café and seating area, primarily to allow students to utilise the space outside of opening hours. Organising, concealing and making better use of this space were key factors in creating a more pleasant environment for staff and students to enjoy.

To secure the shop area we installed a sliding wall partition; and to refresh the look of this space they asked us to retrofit the counter and storage units with cladding to match the partition doors. We also helped to re-purpose existing seating panels by building bespoke benches and tables to their specification. Additional storage, including shelves, were among the final elements which made an orderly and professional space.

**From top:** customer service area, the seating area, waste sorting units, benches before delivery, the entrance and customer service area before, during and after install. All made from reclaimed scaffold boards and Scottish spruce.



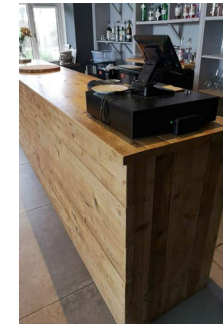


Bespoke storage & display solutions

## Courtyard Pantry, Green & Blue Space, Drill Hall Pantry and Fruin Farm

Eco-friendly retail and hospitality furniture built to host a wide range of products and functions.

Working to fulfil the needs of community organisations and local businesses, we build a huge range of storage, display and serving units which help to add character and functionality to any space. Some come to us with finished specifications, others look for our assistance in creating designs based on their requirements.



From top: moveable shop display units for Drill Hall Pantry, bar top for events venue Fruin Farm, shelving units for Courtyard Pantry, cash desk and shelving for Stirling University's Green & Blue Space.

Stefan Krajcik Photography

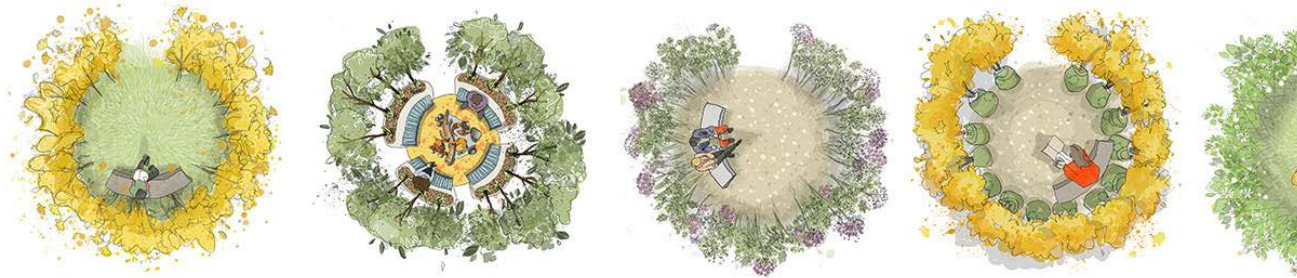
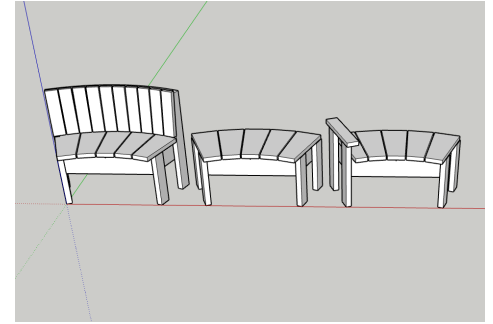




Bespoke seating

## HALO Gardens with erz.

Intimate seating for social distancing which invest in the future, green recovery and in the community.

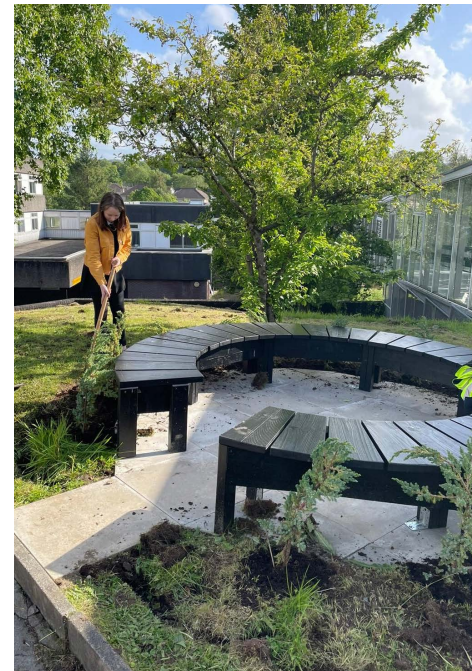


Conceived during lockdown, the HALO Gardens are erz.'s response to our communal experience of the COVID 19 pandemic. Designed for family and friends to meet safely, erz. have conceptualised several different HALOs for the community to decide which type of space they'd like to have.

Built using reclaimed scaffold boards and Scottish spruce, the HALO gardens are an investment in the future, in green recovery and in community.



All photos are at the Royal Alexandra Hospital, Glasgow. Visit [halogardens.eco](http://halogardens.eco) to learn more or enquire about your own HALO garden.





Bespoke gardening equipment

## Accessible Allotments & Cromdale Square

Helping to strengthen our local communities and become more inclusive of everyone.

The expansion at Mansewood Allotments is part of Glasgow City Council's initiative to meet the huge demand for accessible growing spaces, a requirement of the Community Empowerment (Scotland) Act. We were supplied designs to build the trough planters which were made from Scottish spruce.

CCG Scotland provides construction and manufacturing services to the public and private sector in Scotland. As part of a new development of affordable homes with Linthouse Housing Association, they asked us to build a set of raised beds (including 2 with sloping base to allow for wheelchair access) to help encourage residents of all ages to get growing. They were installed next to the playground at Cromdale Square on the former site of Drumoyne Primary School in Govan.



**Above:** accessible raised beds made from sleepers at Cromdale Square, Govan.

**Below:** trough planters made from Scottish spruce for Mansewood High Accessible Allotments.





Other projects

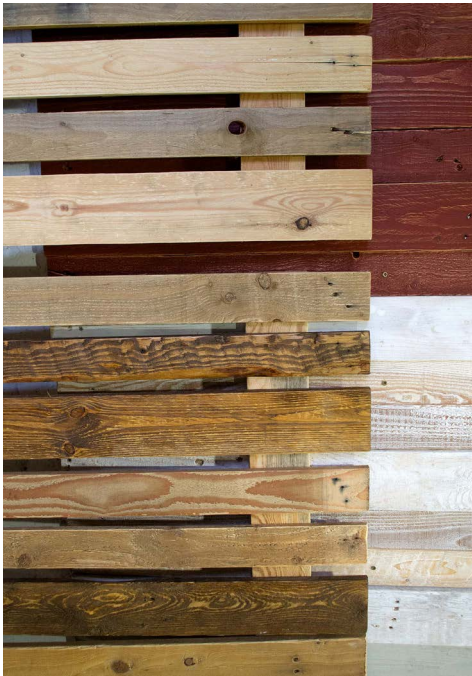
**More of our bespoke projects are available to view online.**

Explore our website (especially news!) and social media to see even more of our bespoke work for customers in the public, private and third sector.





Durable & eco-friendly finishes



Everything we design and build is finished with Osmo, a company making **high quality finishes** from carefully harvested **natural oils and hard waxes**.



**Osmo finishes**  
Protect the wood inside and out.  
Does not form a film.  
Instead it forms a protective, microporous surface.



**Traditional oils**  
Protects the wood from within.  
Does not form a film.  
Does not form a protecting surface.



**Other varnishes**  
Protects the wood from outside.  
Forms a film on surface.  
Creates a thick layer which can flake, crack or peel.

These natural ingredients are not only better for us and the environment, they're also better for the wood. Compared to traditional oils and varnishes, Osmo finishes are more durable because they both penetrate into the wood and lay on the surface.

Their products are also low/zero VOC (volatile organic compounds). Many VOCs are harmful to the environment and human health, so it's extremely important we avoid the use of these compounds.

Osmo oil and wax finishes both penetrate into the wood and lay on the surface, which means that with the correct maintenance, they're less likely to crack, peel or blister. They're also much easier to partially renovate, they have great fluid resistance, and because of their ingredients, they're easy to maintain.

Visit [osmouk.com](http://osmouk.com) to learn more about their finishes and what's available.





## Our timber yard is home to a huge range of affordable reclaimed timber

Having been established for over 10 years, we've been able to build strong connections with local businesses to ensure relatively reliable streams of reclaimed timber. Some of the wood we source is either decommissioned from construction sites or seconds from sawmills. Whilst this means the timber is not structurally graded, it's still perfectly suitable for many other constructional purposes. A proportion of our materials also come to us via our wood collections service which is much more varied.

Trade prices apply to larger orders.

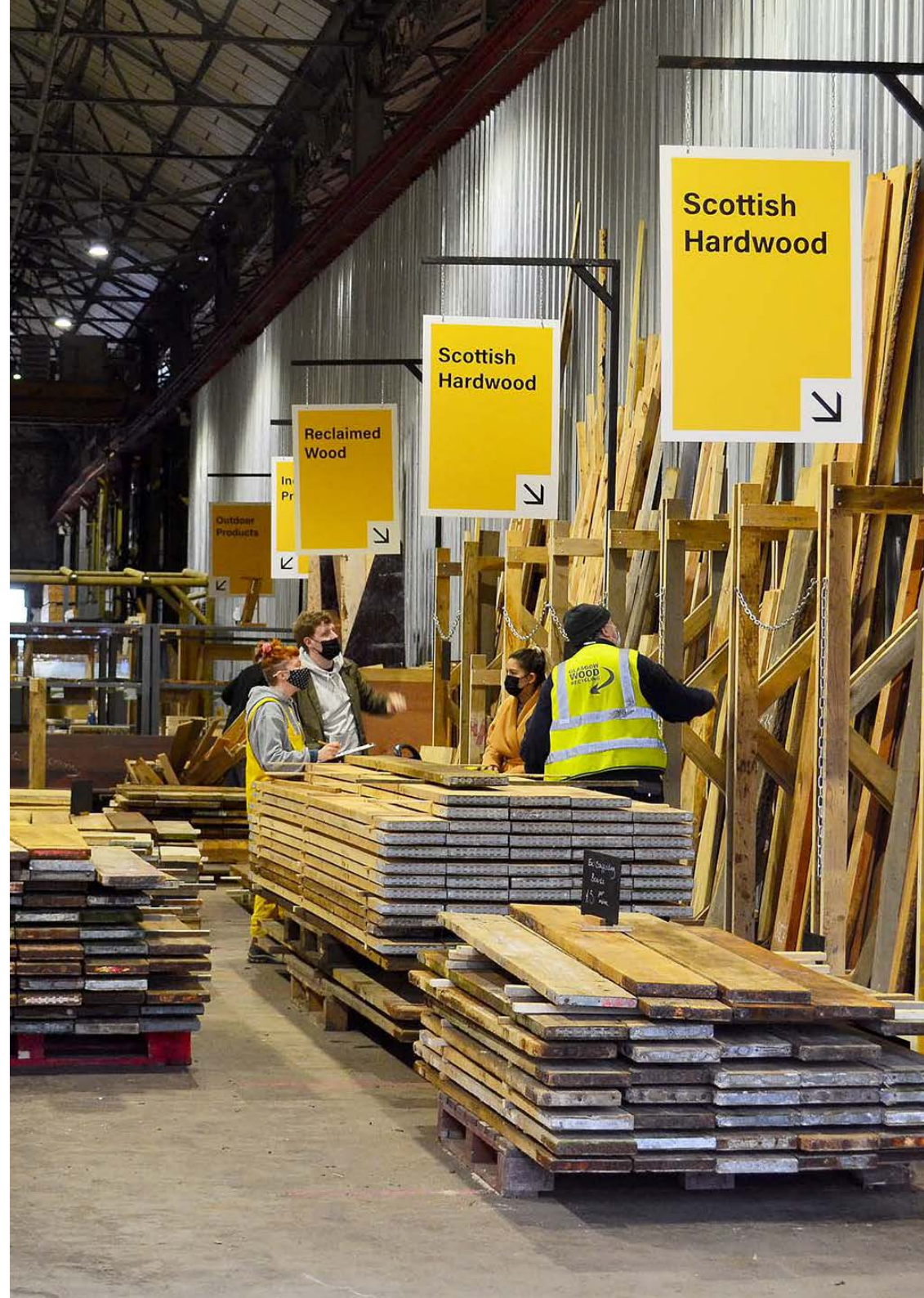
### Regular stocks of timber include:

- Scottish spruce (lengths up to 4.8m)
- Scaffold boards (lengths up to 3.9m)
- Whole pallets & pallet slats (1-2.4m+)
- Whisky barrels & staves
- Hardwood\*
- Sheet materials\*

For current timber prices please visit our website: [glasgowwood.org.uk/timber](http://glasgowwood.org.uk/timber)



\*smaller and varied quantities available.





By working with us you're not only **supporting the community** - you're also helping to **build a more circular economy**. In 2022:

Timber reuse & recycling (estimated)

**3,171.5m<sup>3</sup>**

Volunteer hours provided

**5,345**

Local people who donated their time

**36**



**Get in touch** with us to discuss your next project

0141 237 8566  
[info@glasgowwood.org.uk](mailto:info@glasgowwood.org.uk)  
[glasgowwood.org.uk](http://glasgowwood.org.uk)

Unit 6 Barclay Curle Complex,  
739 South St, Glasgow, G14 0BX



Citi Micro-Entrepreneurship Sustainability Award Winner 2019

A part of and accredited by

